



YEA SHIN TECHNOLOGY CO., LTD

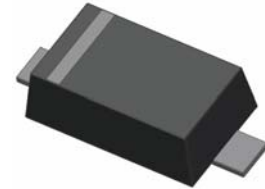
1N4448WFL

400mW SOD-123 SURFACE MOUNT  
Small Outline Flat Lead Plastic Package  
General Purpose Application  
Fast Switching Diode

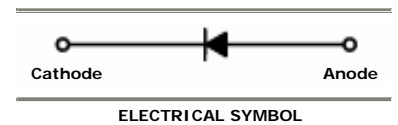


**Absolute Maximum Ratings**  $T_A = 25^\circ\text{C}$  unless otherwise noted

Symbol	Parameter	Value	Units
$P_D$	Power Dissipation	400	mW
$T_{STG}$	Storage Temperature Range	-65 to +150	$^\circ\text{C}$
$T_J$	Operating Junction Temperature	+150	$^\circ\text{C}$
$V_{RSM}$	Non-Repetitive Peak Reverse Voltage	100	V
$V_{RRM}$	Repetitive Peak Reverse Voltage	75	V
$I_{FRM}$	Repetitive Peak Forward Current	300	mA
$I_o$	Continuous Forward Current	150	mA



SOD-123 Flat Lead



These ratings are limiting values above which the serviceability of the diode may be impaired.

**Specification Features:**

- Fast Switching Device ( $T_{RR} < 4.0$  nS)
- General Purpose Diodes
- Flat Lead SOD-123 Small Outline Plastic Package
- Surface Device Type Mounting
- Moisture Sensitivity Level 1
- Clip Bonding Construction, Good Thermal Capability
- Pb Free Version and RoHS Compliant
- Matte Tin(Sn) Lead Finish with Nickel(Ni) Underplate
- Band Indicates Cathode

**DEVICE MARKING CODE:**

Device Type	Device Marking
1N4448WFL	D2

**Electrical Characteristics**  $T_A = 25^\circ\text{C}$  unless otherwise noted

Symbol	Parameter	Test Condition	Limits		Unit
			Min	Max	
$B_V$	Breakdown Voltage	$I_R = 100\mu\text{A}$ $I_R = 5\mu\text{A}$	100 75		Volts
$I_R$	Reverse Leakage Current	$V_R = 20\text{V}$ $V_R = 75\text{V}$		25 5	nA $\mu\text{A}$
$V_F$	Forward Voltage	$I_F = 5\text{mA}$ $I_F = 100\text{mA}$	0.62	0.72 1.0	Volts
$T_{RR}$	Reverse Recovery Time	$I_F = 10\text{mA}$ $I_R = 60\text{mA}$ $R_L = 100\Omega$ $I_{RR} = 1\text{mA}$		4	nS
<b>C</b>	Capacitance	$V_R = 0\text{V}$ , $f = 1\text{MHz}$		4	pF

# DEVICE CHARACTERISTICS

## 1N4448WFL

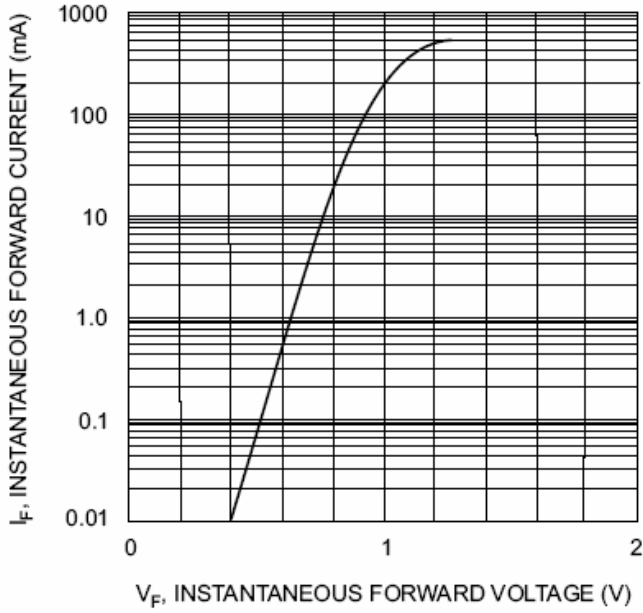


Fig. 1 Forward Characteristics

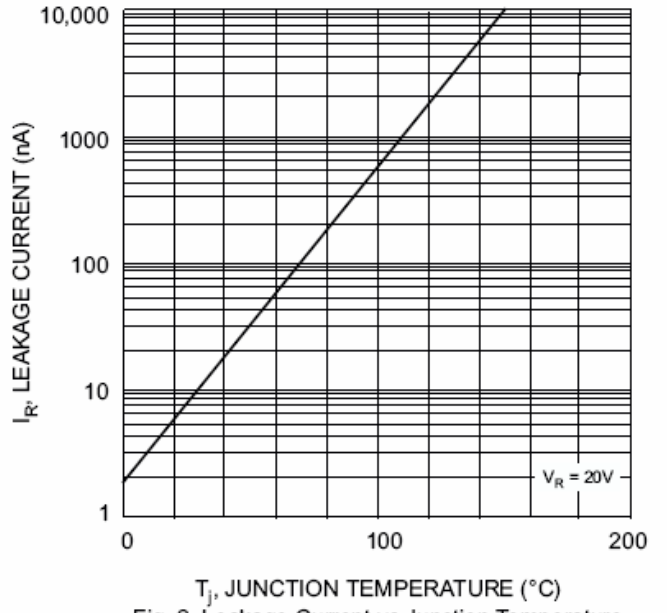


Fig. 2 Leakage Current vs Junction Temperature

# PACKAGE OUTLINE & DIMENSIONS

## 1N4448WFL

### Flat Lead SOD-123 Package Outline

